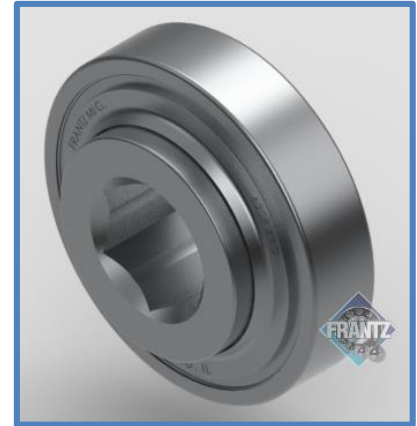




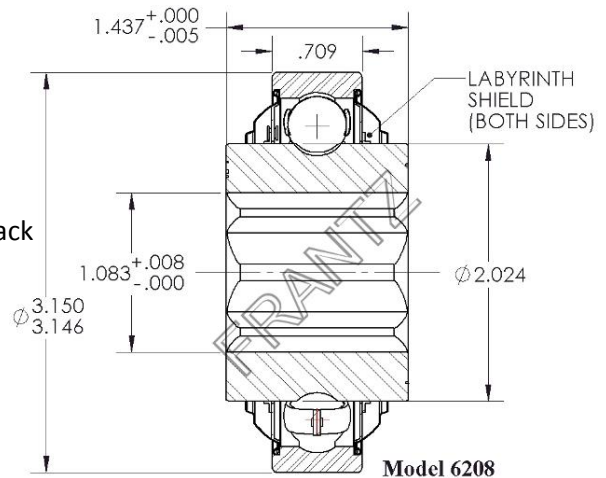
# 6208

## ABEC-1 Precision Bearing



### Specifications

- Bearing Type:** Machined Race
- Load Capacity:** 6,630 lbs.
- Mounting Type:** Counterbore & Press Fit
- Tube Size/Gauge:** 3.5" x 0.30" \*
- Max OD of Body:** 3.150"
- Bore Size & Type:** 1-1/16" – Hex
- Extension:** 0.364"
- Lubrication:** Grease
- Temperature Range:** Grease, -4 to 248 F° \*\*
- Protection:** Labyrinth Shields, Front & Back
- Regreasable:** No



\* Also counterbore & press fit into 3 1/2" x 7/32", 3 5/8" x 9/32" and 3 3/4" x 11/32" tubes  
 \*\* Consult with FRANTZ Customer Service for high temp application recommendations.

Part Number for Ordering:  
 Grs - 6208000123

### Applications: Benefits & Features

**ABEC-1 Precision Bearing:** High load capacity due to machined, chrome steel raceways.

**Targeted Applications:** Heavy-duty powered or non-powered conveying applications for sheet steel, lumber, full pallets, drums and bulk packaging where extremely heavy loads exist. For use in abusive industrial applications. Commonly referred to as an 'Ag Bearing'.

**Long Life:** Precision ABEC-1 bearing designed for extremely long life with no maintenance requirement. Lubrication designed to excel in high load applications while providing years of satisfactory use. Labyrinth shields minimize contaminants from entering the ball elements. Hardened bearing steel reduces bearing fatigue while increasing useful product life.

...Roll Easy with FRANTZ®

FRANTZ

Customer Service, Product Samples and Quotations: 815.625.7063

FRANTZ Manufacturing Company P.O. Box 497, Sterling IL 61081-0497 www.frantz-mfg.com