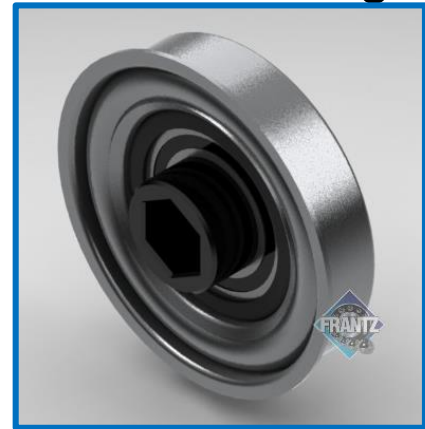




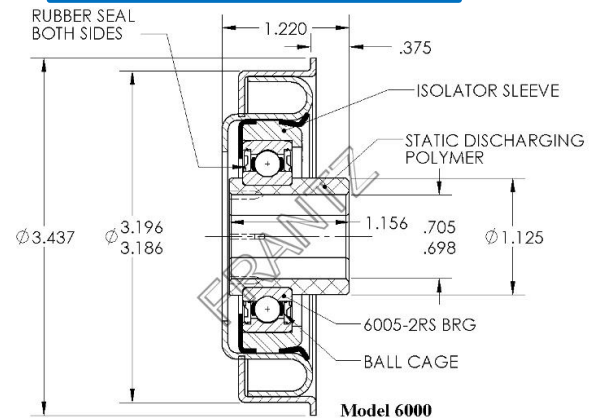
6000

GenStar® Precision Bearing



Specifications

- Bearing Type:** ABEC-1 Precision
- Load Capacity:** 1,000 lbs.
- Mounting Type:** Slip & Swage Fit *
- Tube Size/Gauge:** 3.5" x 9g
- Max OD of Body:** 3.196"
- Bore Size & Type:** 11/16" – Hex
- Extension:** 0.375"
- Lubrication:** Grease
- Noise Level:** Quiet
- Static Discharge:** Yes, Direct Injection Molded
- Temperature Range:** -4 to 180 Fahrenheit
- Protection:** Rubber Seals Front & Back
- Regreasable:** No – Maintenance Free



Part Number for Ordering: Grs - 6000226123

Applications: Benefits & Features

- Dual Purpose Bearing:** Great for use in either gravity or powered conveyor applications. Greased ABEC-1 Bearing provides maintenance-free operation.
- Targeted Applications:** Conveyor manufacturers, distribution/warehousing, food & beverage, air cargo/airports, manufacturing equipment, packaging equipment and pallet flow equipment, Chain Driven Live Roller (CDLR) conveyors. The low noise rating is a function of polymer bushing integrated with precise rolling elements.
- Can be used in high-speed applications:** Direct injection molded polymer static discharge bushing is standard and allows for excellent concentricity. Can be used in high speed powered conveyor applications.
- Long Life:** Bench tested up to 302 SFM / 220 RPM carrying a continuous load of 2,000 lbs. per roller. The core ABEC-1 bearing is rated at 2,260 lbs. The ABEC-1 high speed rating coupled with the FRANTZ® IronGrip adapter assures long product life in many material handling and specialty equipment manufacturing applications.

* Press Fit option available with 3.5", 7 gauge counterbored tube.

...Roll Easy with FRANTZ®

FRANTZ

Customer Service, Product Samples and Quotations: 815.625.7063

FRANTZ Manufacturing Company P.O. Box 497, Sterling IL 61081-0497 www.frantz-mfg.com