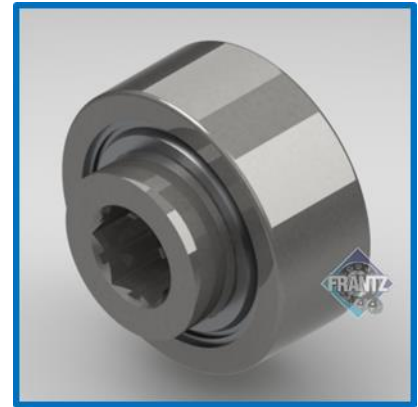




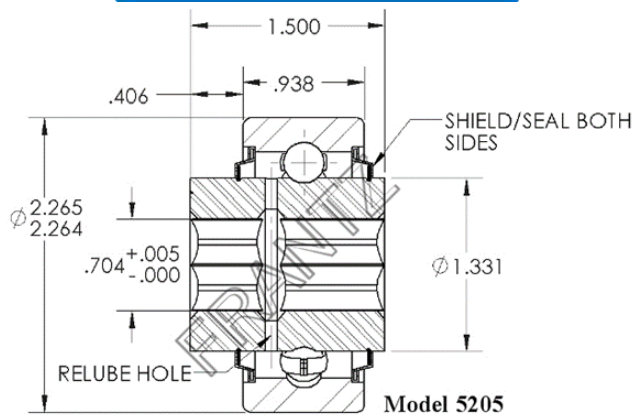
5205

ABEC-1 Precision Bearing



Specifications

- Bearing Type:** Machined Races
- Load Capacity:** 2,380 lbs.
- Mounting Type:** Counterbore & Press Fit
- Tube Size/Gauge:** 2.5" x 7g or 2-9/16" x 7g
- Max OD of Body:** 2.265"
- Bore Size & Type:** 11/16" – Hex
- Extension:** 0.406"
- Lubrication:** Grease
- Temperature Range:** -13 to 210 F° *
- Protection:** Seals – Single Lip Light Drag Seal, Front & Back
- Regreasable:** Yes



Part Number for Ordering:
Grs - 5205000123

* Consult with FRANTZ Customer Service for high temp application recommendations.

Applications: Benefits & Features

ABEC-1 Precision Bearing: High load capacity due to precision machined, chrome steel raceways.

Targeted Applications: Heavy-duty powered or non-powered conveying applications for sheet steel, lumber, full pallets, drums and bulk packaging where extremely heavy loads exist. For use in abusive industrial applications. Commonly referred to as an 'Ag Bearing'. This is a heavy-duty bearing used often in CDLR Palletizers as well.

Long Life: Precision ABEC-1 bearing designed for extremely long life with no maintenance requirement. Lubrication designed to excel in high load applications while providing years of satisfactory use. Integral seals minimize contaminants from entering the ball elements. Hardened bearing steel reduces bearing fatigue while increasing useful product life.

...Roll Easy with FRANTZ®

FRANTZ

Customer Service, Product Samples and Quotations: 815.625.7063

FRANTZ Manufacturing Company P.O. Box 497, Sterling IL 61081-0497 www.frantz-mfg.com