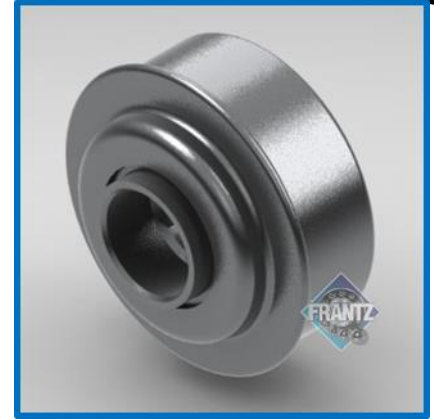




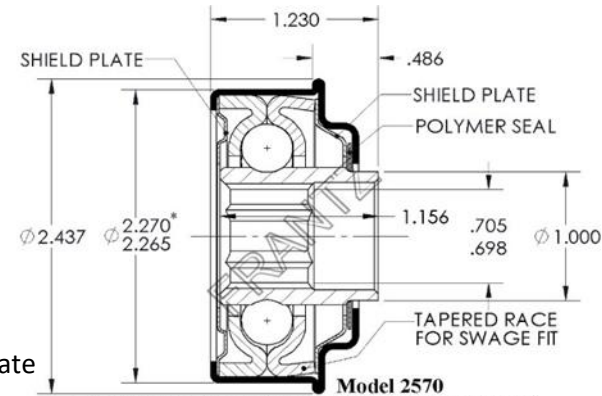
# 2570

## Unground / Commercial Bearing



### Specifications

- Bearing Type:** Power Swage Flanged
- Load Capacity:** 425 lbs.
- Mounting Type:** Press & Swage Fit
- Tube Size/Gauge:** 2.5" x 11g \*
- Max OD of Body:** 2.270"
- Bore Size & Type:** 11/16" – Hex
- Extension:** 0.486"
- Lubrication:** Oil or Grease
- Temperature Range:** Oil, -10 to 220 F°  
Grease, -22 to 220 F°  
*220 F° due to polymer seal; consult with FRANTZ Customer Service for high temp application recommendations*
- Protection:** Front – Polymer Seal, Shield Plate  
Rear – Shield Plate
- Regreasable:** No – Model 2580 with grease port feature



Part Number for Ordering:  
Oil - 2570226023  
Grs - 2570226123

\* Also fits into 2-1/2" 12g and 2-5/8" 7g; Using with 12g tube provides cost reduction opportunity for overall roller unit cost.

### Applications: Benefits & Features

- Non-Precision Bearings:** FRANTZ Unground / Commercial bearings offer the least rolling resistance, lower energy consumption and overall a greener option. Engineered to accommodate more axle deflection due to heavy loads or shock, especially when used in longer rollers (as compared to Precision or Semi-Precision bearings), often making commercial bearings the product of choice in many conveyor designs.
- Targeted Applications:** Gravity or powered conveyor applications at low to medium speeds used primarily in packaging, palletizing, shipping/warehousing, cargo dollies and assembly.
- Unique Tapered Race:** Swage with confidence as FRANTZ Power Swage bearings are engineered with a unique design allowing for heavier tubes to be swaged without damaging the bearing's rolling elements.
- Long Life:** FRANTZ Unground / Commercial bearings are engineered and tested to exceed the CEMA standard of one million revolutions.

...Roll Easy with FRANTZ®

FRANTZ

Customer Service, Product Samples and Quotations: 815.625.7063

FRANTZ Manufacturing Company P.O. Box 497, Sterling IL 61081-0497 [www.frantz-mfg.com](http://www.frantz-mfg.com)