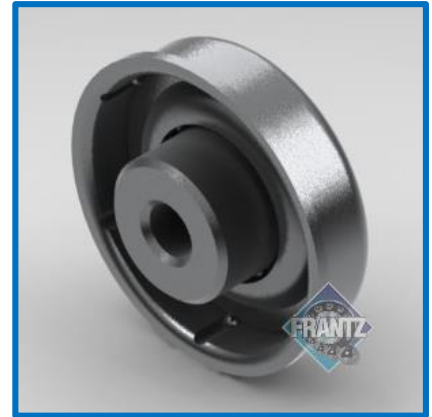




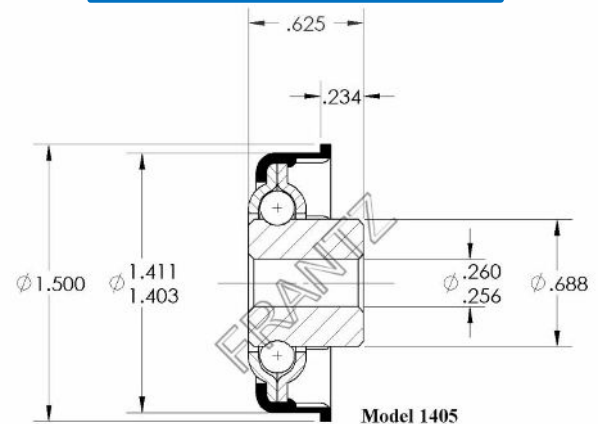
1405

Unground / Commercial Bearing



Specifications

Bearing Type:	Flanged Unground Commercial
Load Capacity:	75 lbs.
Mounting Type:	Press & Swage Fit
Tube Size/Gauge:	1-1/2" x 18g
Max OD of Body:	1.411"
Bore Size & Type:	1/4" – Round
Extension:	.234"
Lubrication:	Oil or Grease
Temperature Range:	Oil, -40 to 400 F° Grease, -40 to 300 F°
Inner Race:	Machined & burnished ball groove, case hardened
Outer Race:	Dual outer race structure, case hardened
Balls:	Precision ground carbon steel, case hardened



Part Number for Ordering:
Oil - 1405226023
Grs - 1405226123

Applications: Benefits & Features

Non-Precision Bearings: FRANTZ Non-Precision bearings offer the least rolling resistance, lower energy consumption and overall a greener option. Engineered to accommodate more axle deflection due to heavy loads or shock, especially when used in longer rollers (as compared to Precision or Semi-Precision bearings), often making non-precision bearings the product of choice in many conveyor designs.

Targeted Applications: Gravity or powered conveyor applications at low to medium speeds requiring a small tube diameter used primarily in packaging, shipping, warehousing and assembly. [Tapered Roller Application](#) – Use in conjunction with FRANTZ model 1902. The 1902 is used on the small end of 1" x 18 gauge tube, while the 1405 is for the larger end, 1-1/2" x 18 gauge tube.

Long Life: FRANTZ non-precision bearings are engineered and tested to exceed the CEMA standard of one million revolutions.

...Roll Easy with FRANTZ®

FRANTZ

Customer Service, Product Samples and Quotations: 815.625.7063

FRANTZ Manufacturing Company P.O. Box 497, Sterling IL 61081-0497 www.frantz-mfg.com