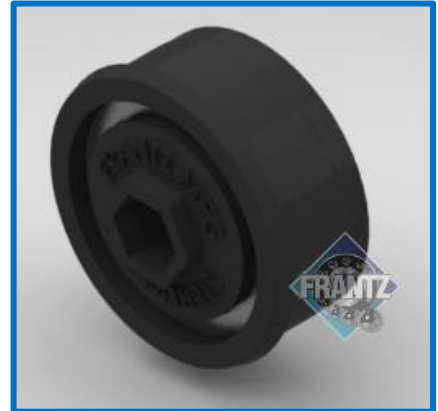




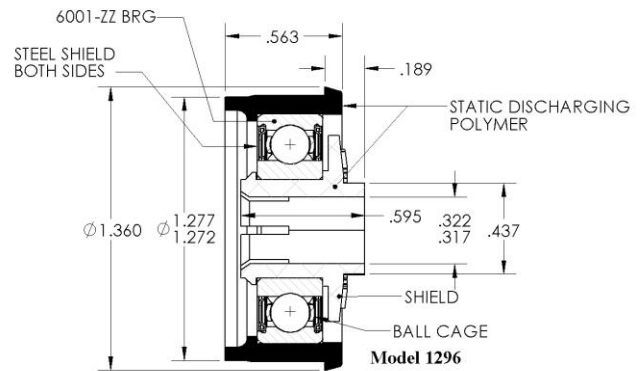
1296

ABEC-1 Precision Polymer Housed Bearing



Specifications

- Bearing Type:** ABEC-1 Precision, Polymer Housed
- Load Capacity:** 300 lbs.
- Mounting Type:** Slip & Swage Fit
- Tube Size/Gauge:** 1-3/8" x 18g
- Max OD of Body:** 1.277"
- Bore Size & Type:** 5/16" – Hex
- Extension:** 3/16"
- Lubrication:** Oil or Grease
- Noise Level:** Quiet
- Static Discharge:** Yes, Direct Injection Molded
- Temperature Range:** 0 to 150 Fahrenheit
- Protection:** Steel Shield, Front & Back
- Regreasable:** No – Maintenance Free



Part Number for Ordering:
 Oil - 1296000023
 Grs - 1296000123

Applications: Benefits & Features

- Dual Purpose Bearing:** Great for use in either gravity or powered conveyor applications. Oiled ABEC-1 Bearing provides maintenance-free operation.
- Targeted Applications:** Conveyor manufacturers, distribution/warehousing, food & beverage, air cargo/airports, manufacturing equipment and packaging equipment.
- Can be used in high-speed applications:** Direct injection molded polymer static discharge housing and bushing are standard and can be used in high speed powered conveyor applications.
- Long Life:** Bench tested 100,000,000 revolutions @ 800 RPM / 468 SFM.

...Roll Easy with FRANTZ®

FRANTZ

Customer Service, Product Samples and Quotations: 815.625.7063

FRANTZ Manufacturing Company P.O. Box 497, Sterling IL 61081-0497 www.frantz-mfg.com