

FRANTZ 3100 Series Semi-Precision Bearing

3-1/2" Tube

- Load capacity 1250 # per bearing
- Rugged Extra Heavy Duty
- Quiet running operation
- Machined Inner and Outer Race
- Carbon Steel Shell
- Chrome Steel Balls
- Standard Polymer Seal and Outer Shield
- Mathews B1080 Series Interchange



Load & Life CEMA standard testing of 3.50" diameter x .300" thick wall counterbored conveyor rollers has been shown carry a continuous load of 2500lbs.

Standard Fit-Up These straight faced bearings can be press fit into the following tubes:

3 1/4"	13g
3 1/4"	12g
3 1/2"	7/32"
3 1/2"	.30" Counterbored
3- 5/8"	9/32"
3 3/4"	11/32"
4 1/2"	Counterbored

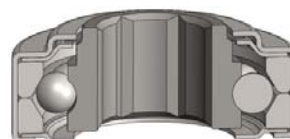
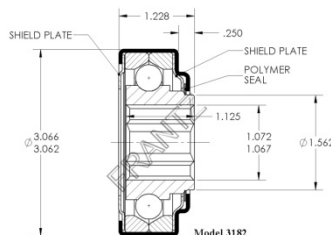
Components Carbon steel shell aids in bearing to tube fit-up and allows a very secure fit in counterbored roller assemblies. Precise *machined outer races* and the use of the *higher precision chrome balls* are distinguishing factors that allow for heavier load bearing abilities of the FRANTZ 3100 Series bearing and qualify it for semi-precision classification. Sealing and shielding options help prevent contamination from entering into the rolling elements and extending life.

Lubrication The FRANTZ 3100 series bearings are offered with Duralube; premium state-of-the-art lithium complex grease that exhibits good rust and corrosion resistant properties. Additionally, it provides excellent noise reduction and mechanical stability. Duralube has a high dropping point in excess of 500°F which insures retention where high temperatures are encountered. The product has been formulated with a special additive package which insures high film strength, extreme pressure and anti-wear properties. The high quality virgin base fluids provide excellent natural oxidation inhibition. This combined with effective anti-oxidants as well as corrosion inhibitors provides extra stability under storage and extreme service conditions. Typical operating temperatures for continuous use is -10° F to +300° F. Recommended ambient temperature range of bearing is -4° F to +240° F.

High Impact Assembly The FRANTZ 3100 Series bearing assembly is specially designed to be press fit into counterbored heavy wall pipe. Rollers exposed to high impact shock loads are suitable for this assembly. A precise fit-up between the bearing assembly and roller tube will aid in increasing bearing life. Loading zones of conveyors which incur severe shock loads require bearings built to last. Consider FRANTZ 3100 Series Bearings for those more demanding environments.

Interchangeability The semi-precision features of the 3100 Series bearing and its heavier load bearing capability is designed for interchangeability with the FRANTZ Commercial Unground 3000 Series bearings. Each series maintains the same extensions and key dimensions thus eliminating costly tool changes for relocating stakes on axles and modification of tube lengths. Interchangeability provides flexibility, smooth transitions, and reduces costly set ups. FRANTZ Semi-Precision 3100 Series bearings are a cost effective replacement for Mathews B1080 Series bearings.

<u>3100 Series</u>	<u>Load Rating</u>	<u>3000 Series</u>	<u>Load Rating</u>	<u>Mathews B1080s</u>	<u>Load Rating</u>	<u>Features</u>	<u>Uses</u>
3165	1250#	3065	603#	B1080	1250#		Basic Economy
3182	1250#	3082	603#	B1086	1250#	Dbl Shields, Front Seal	
3184	1250#	3084	603#	-		Dbl Shields, Dbl Seals	
3185	1250#	3085	603#	-		Dbl Shields, Frt Seal, Sealing Ring, Regrease Dome	
3190	1250#	3090	603#	B1083	1250#	Rear Shield, Labyrinth Front Shield	High Temp
3192	1250#	3092	603#	B1082	1250#	Rear Shield, Labyrinth Front Shield, Regrease	High Temp
3193	1250#	3093	603#	B1084	1250#	Rear Shield, Labyrinth Front Shield, Felt Seal	Dusty Environment
3194	1250#	3094	603#	B1081	1250#	Rear Shield, Labyr Frt Shld, Felt Seal, Regrease	Dusty Environment
3195	1250#	3095	603#	-		Rear Shld, Labyr Frt Shld, Seal Rng, Regrs Dome	High Temp



FRANTZ Bearing Division

3201 West LeFevre Road
Sterling IL 61081
815.625.7063

www.frantz-mfg.com